

Why CUHK's Master of Science in Gastroenterology?



PROGRAMME

- Asia's first and only postgraduate programme in gastroenterology: multidisciplinary approach teaching that prepares students to become leaders in various fields
- Excellent leadership and critical thinking skills training
- Invaluable research and networking opportunities: connect with foremost experts
- Evening classes to accommodate full time workers



PEOPLE

- Outstanding faculty members, leading figures in medicine
- Experts from gastroenterology, hepatology, surgery, radiology, pharmacology, endoscopy, psychiatry, statistics, nutrition and dietetics
- Student community consists of brilliant aspiring and practicing medical professionals



PLACE

- CUHK, #7 university by Times Higher Education (THE) Asia University Ranking
- Classes conducted at Prince of Wales Hospital with various settings such as the lab, the ward, the endoscopy centre, the 'Minimally Invasive Surgical Skills Centre', etc
- Students acquire relevant, extensive, hands-on clinical experience in labs and hospital setting



FACILITIES

- Medical library provides 24-hour access to resources
- Excellent recreation facilities: world class libraries, art museums, music halls, swimming pool, sport fields, gymnasium and water sports centre

CONTACT DETAILS

Institute of Digestive Disease,
The Chinese University of Hong Kong

Room 94020, 7/F, Lui Che Woo Clinical Sciences Building,
Prince of Wales Hospital, Shatin, N.T., Hong Kong

Tel: (852) 2637 3201 Fax: (852) 2646 8915
Email: postgrad.gi@cuhk.edu.hk



Website: msgi.idd.org.hk

Who can Study the Programme?

You don't have to be a gastroenterologist or an aspiring one to enroll in our programme. Our alumni come from diverse professional backgrounds:

- Fresh degree graduates
- Doctors
- Nurses
- Researchers
- Pharmacists
- Dietitians
- Allied health practitioners
- Nutritionists
- Chinese Medicine practitioners
- Radiation therapists

These healthcare professionals are mostly from respectable institutions such as University of McGill, University of California, and University of Sydney. They are drawn to our university from UK, USA, Canada, Australia, China, Philippines ...

"This degree sets me apart from my competitors and helped me launch my medical career. Only several months after I certified my degree in China, I landed a full-time position at the Nanfang Hospital in Guangzhou."

Lucas Liu
State Key Laboratory of Organ Failure Research,
Nanfang Hospital
Alumnus 2014

Graduate Career Prospects

After finishing the programme:



42%

of alumni received a promotion

* Based on the alumni survey from students graduated between 2013 and 2016



33%

of local Hong Kong alumni received a **salary increase of 51% or above**



100%

of alumni would recommend the programme

What you need to know about studying M.Sc. in Gastroenterology

ENTRY REQUIREMENTS

Applicants should have obtained a Bachelor's degree in a healthcare related discipline or biomedical sciences from a recognized institute or equivalent.

ENGLISH LANGUAGE REQUIREMENTS

Applicants should fulfill the University's minimum English language requirements.

For details, please see:
<http://msgi.idd.org.hk/en/application>

Tuition Fee

HK\$143,000
(the first upon confirmation of enrollment)

One Year Full Time

Paid in 2 installments

Two Year Part Time

Paid in 4 installments

Application Deadline

30 Apr 2019



How to apply

1. Online Application
Apply online at
<http://msgi.idd.org.hk/en/application>

2. Send Application Form
After the online submission, quote the "Application No." and send completed application form and required support documents to Institute of Digestive Disease office before the application deadline.

3. Application Results
Check application results on CUHK Graduate School's website from April to August.

4. Application Succeed!
Successful applicants will receive their offer letter by mail. Applicants may consider their applications unsuccessful if they do not hear from the CUHK Graduate School thereafter.

MASTER OF SCIENCE IN GASTROENTEROLOGY

1 Year Full Time / 2 Years Part Time



2019

Master of Science in Gastroenterology

is Asia's first and only postgraduate programme in Gastroenterology. Courses are offered in two patterns: one-year full time or two year part time. Our mission is to provide a comprehensive training for physicians, nurses and other healthcare practitioners to help them become a leading expert in the field of digestive diseases.

Multidisciplinary Approach Teaching: Broad Spectrum of Knowledge

Combining the expertise of medical professional from each specialization, this ground-breaking master's programme aims to deliver a medical education with a multi-disciplinary approach to better prepare future generations of medical professionals to enhance care and treatment for patients with gastrointestinal and liver diseases.

Students learn from experts of gastroenterology, hepatology, surgery, radiology, pharmacology,

endoscopy, psychiatry as well as nutrition and dietetics. On completion of the programme, students will gain comprehensive knowledge in the principles in gastroenterology.

Relevant Courses
 GAST5002 - Interventions and Pharmacology in Gastroenterology
 GAST5003 - Nutrition and Dietetics
 GAST5005 - Liver, Hepatobiliary, and Pancreatic diseases
 GAST5007 - Psychological Intervention, Counseling and Complementary Medicine

"I gained better understanding about diseases like chronic hepatitis B and IBD. The teaching on research methods, medical statistics, clinical governance and health administration has filled the gap in my specialist training."

Philip Sham
 Specialist in Paediatrics, St. Paul's Hospital, Alumnus 2014

experience from each practical session and develop confidence to become an expert in gastroenterology.

Relevant Courses
 GAST5006 - Small Bowel and Colonic Diseases
 GAST5008 - Interactive Workshops - Practical Management of Common GI Diseases

"The practicum sessions give us ample opportunities to apply theories in practice at the affiliated world-class endoscopy centre. It prepares me well for my clinical duties."

Qianjun Li
 Resident Doctor, No.2 Yinzhou NingBo Hospital, Alumnus 2015

Putting theory into Practice

Students benefit greatly from acquiring hands-on experience during their studies. They are expected to successfully complete a series of practical sessions by the end of the programme. Our clinical practice and interactive workshops provide students with real-world exposure in patient care which allows them to put theory into practice. Students can gain valuable



Evaluative and Critical Thinking Skills Training

The advancement of medicine is fueled by medical research. Keeping up with new knowledge is essential to staying competitive for future challenges. For healthcare professionals to acquire unbiased new information, skills to critically appraise medical literature are crucial. Our programme is designed to equip students

with cutting-edge research methodologies, medical statistics and clinical practices.

Relevant Courses
 GAST5016 - Project and Dissertation
 GAST5017 - Epidemiology and Clinical Research

"The course gave me a comprehensive insight into various aspects of gastroenterology and equipped me with knowledge about contemporary therapies and technologies in the field."

Lawrence Lee
 Pharmacist, Yan Chai Hospital, Alumnus 2016



Invaluable Network

Our students come from various countries and professional backgrounds. There are ample opportunities to meet and network with professionals within your specialty or from a diverse field of specialties, and, to participate in world-class medical events, including the International Digestive Disease Forum (IDDF) and The Practical Workshop in Diagnostic and Therapeutic Endoscopy. Students will be able to meet top scholars and some of the most

influential speakers from around the world. Get ready to be inspired and go expand your horizon!

"This Master programme provides excellent networking opportunities. I have met a number of leading healthcare professionals through this programme, and found it to be an effective platform for sharing valuable clinical experience and knowledge."

Desmond Sit
 Dietitian, Pamela Youde Nethersole Eastern Hospital, Alumnus 2017



Excellent Leadership Development

Our postgraduate programme offers a range of useful knowledge from communication skills to healthcare management. Our lecturers include senior managers in healthcare policy, experienced human resource managers and training consultants who teach solving skills, complaint management, crisis management and strategic planning. Advanced management

techniques can help students establish an outstanding portfolio to reach their future career goals.

Relevant Courses
 GAST5010 - Health Service Management & Healthcare Administration
 GAST5011 - Professional Communication Workshop

"They teach us how to treat and manage the most complicated digestive diseases. As a result, I now take care of my patients more confidently and effectively."

Sin Lun Lee
 Registered Nurse, United Christian Hospital, Alumnus 2015

Outstanding Faculty

CUHK's Master of Science in Gastroenterology boasts a faculty made up of some of the world's most prominent medical experts. Students will learn from exceptional professors from a spectrum of specialties, who, beyond their academic credentials, also possess a breadth of clinical experience.



Professor Justin, Che Yuen WU



Chief Operating Officer,
 Medical Centre,
 The Chinese University of Hong Kong

Founding Director,
 Institute of Integrative Medicine,
 The Chinese University of Hong Kong

Former Associate Dean (Development),
 Faculty of Medicine,
 The Chinese University of Hong Kong

Professor Henry, Lik Yuen CHAN

Programme Director



Co-Chairman,
 Strategic and Technical Committee on Viral Hepatitis, WHO Western Pacific Regional Office

Associate Editor,
 Journal of Hepatology, Hepatology International and Seminars in Liver Disease

Associate Dean (Global Engagement),
 Faculty of Medicine, The Chinese University of Hong Kong

Director,
 Center for Liver Health, The Chinese University of Hong Kong

Professor Hong FUNG



Executive Director,
 Medical Centre,
 The Chinese University of Hong Kong

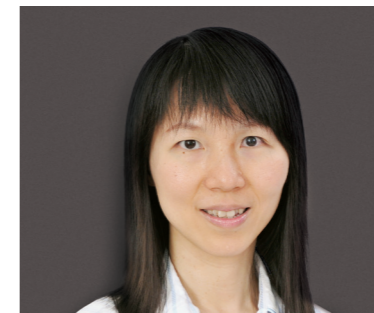
Chief Executive Officer,
 Medical Centre,
 The Chinese University of Hong Kong

Professor of Practice,
 The Jockey Club School of Public Health & Primary Care,
 The Chinese University of Hong Kong

Former Cluster Chief Executive,
 New Territories East Cluster,
 Hospital Authority

Professor Grace, Lai Hung WONG

Associate Director



Editor-in-Chief,
 Hepatology (Hong Kong edition)

Associate Editor,
 Alimentary Pharmacology and Therapeutics

Consultant Hepatologist,
 Center for Liver Health,
 The Chinese University of Hong Kong

Former Chairperson,
 AsiaHep Hong Kong

Professor Eng Kiong YEOH



Director,
 The Jockey Club School of Public Health & Primary Care,
 The Chinese University of Hong Kong

Head,
 Division of Health System, Policy and Management,
 The Chinese University of Hong Kong

Former Secretary for Health,
 Welfare and Food,
 Hong Kong Special Administrative Region Government

Programme Structure & Course Offerings

FULL TIME
(One Year)

Semester 1



Principles in Gastroenterology
 · Investigations in Gastroenterology
 · Interventions and Pharmacology in Gastroenterology
 · Nutrition & Dietetics



Statistics & Research Methodology
 · Epidemiology and Clinical Research

Semester 2



GI & Liver Diseases
 · Upper Gastrointestinal Diseases
 · Liver, Hepatobiliary & Pancreatic Diseases
 · Small Bowel and Colonic Diseases
 · Practical Workshops



Communication & Health Administration
 · Medical Ethics, Communication and Law
 · Health Service Management & Healthcare Administration
 · Professional Communication Workshop

Semester 3



Management in GI Diseases
 · Psychological Intervention, Counseling and Complementary Medicine
 · Interactive Workshops - Practical Management of Common GI Diseases



Project & Dissertation

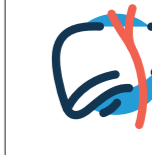
PART TIME
(Two Year)

Year 1 Semester 1



Principles in Gastroenterology
 · Investigations in Gastroenterology
 · Interventions and Pharmacology in Gastroenterology
 · Nutrition & Dietetics

Semester 2



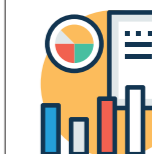
GI & Liver Diseases
 · Upper Gastrointestinal Diseases
 · Liver, Hepatobiliary & Pancreatic Diseases
 · Small Bowel and Colonic Diseases
 · Practical Workshops

Semester 3



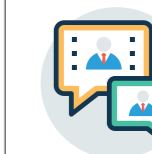
Management in GI Diseases
 · Psychological Intervention, Counseling and Complementary Medicine
 · Interactive Workshops - Practical Management of Common GI Diseases

Year 2 Semester 1



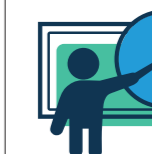
Statistics & Research Methodology
 · Epidemiology and Clinical Research

Semester 2



Communication & Health Administration
 · Medical Ethics, Communication and Law
 · Health Service Management & Healthcare Administration
 · Professional Communication Workshop

Semester 3



Project & Dissertation

• Master of Science in Gastroenterology is **CME, CNE, CDE** accredited, more details on www.msgi.idd.org.hk/programme
 •• Classes will mainly be held in evenings, Prince of Wales Hospital, Shatin, N.T.